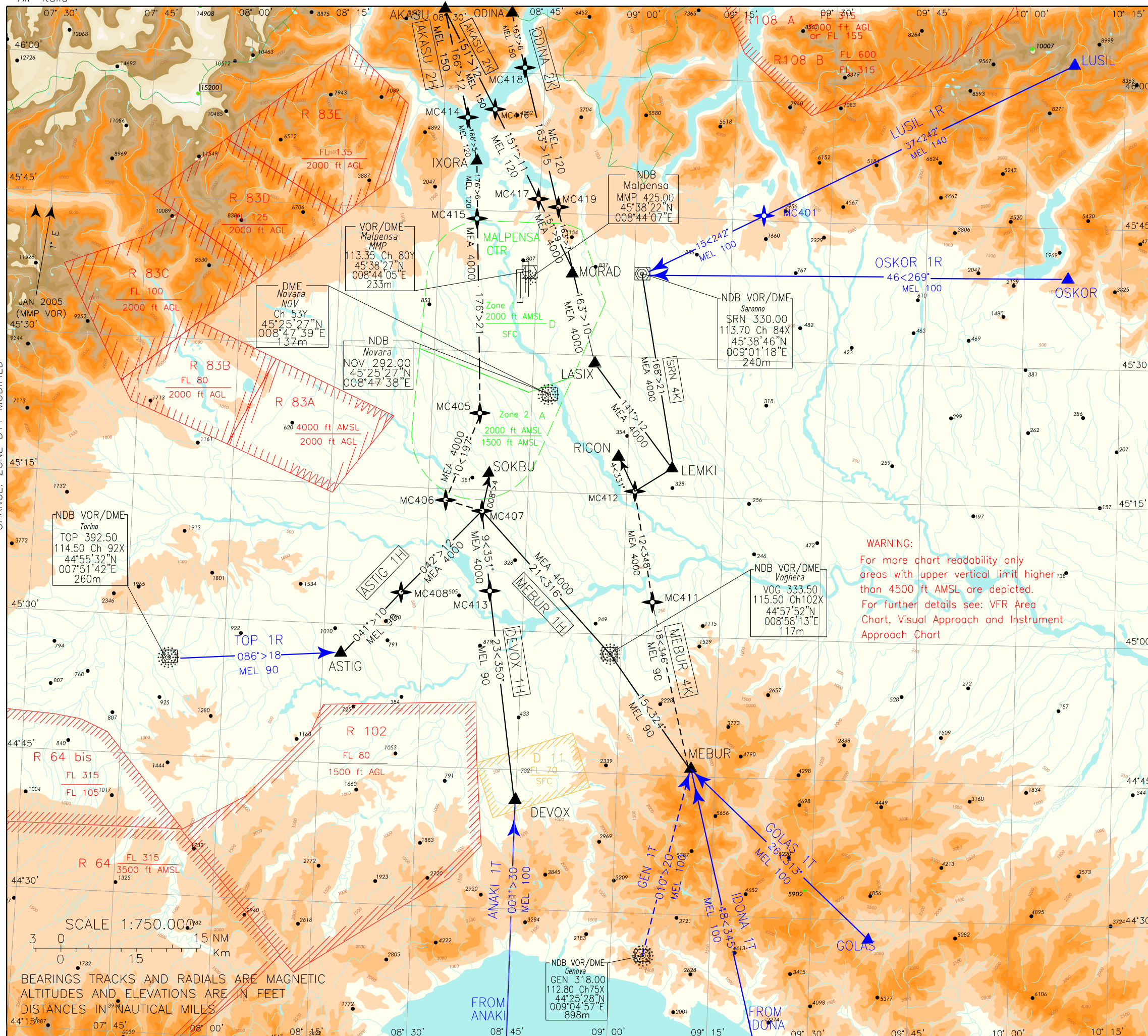


CHANCE: ZONE D11 MODIFIED



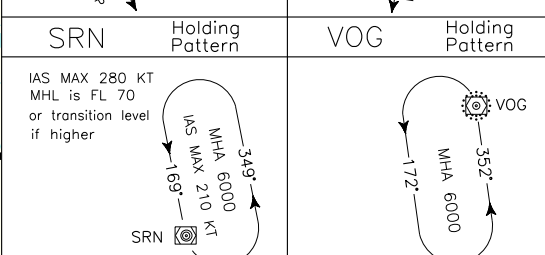
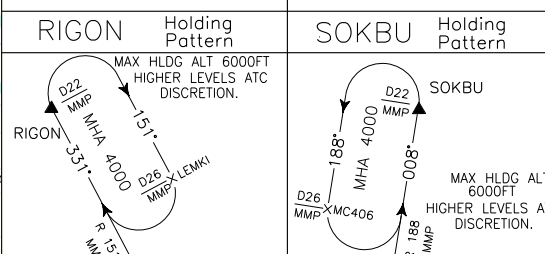
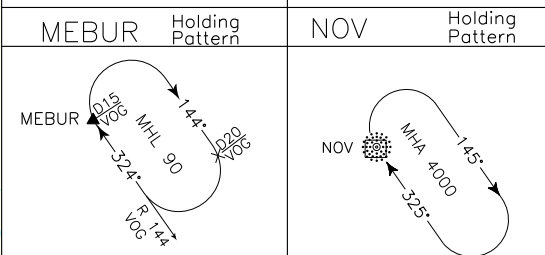
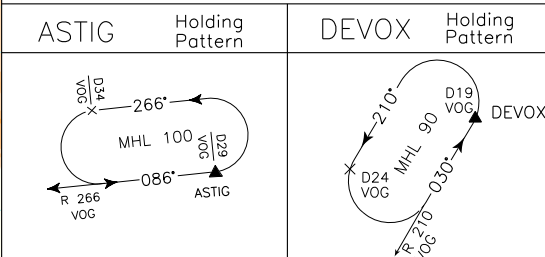
MILANO/MALPENSA

ARRIVAL TRANSITION &
STAR P-RNAV

TRANSITION ALT 6000

FREQUENCIES

APP Milano Radar 126.750 (N)
CH 125.630 (S)
TWR Malpensa TWR (17R/35L) 128.350
Malpensa TWR (17L/35R) 119.000



REMARK
All holding patterns are defined by conventional navigation

LEGEND

- ← 46<269° → STAR
- 14<176° --- STAR ATC DISCRETION
- 10<300° → ARRIVAL TRANSITION
- 20.5<010° --- ARRIVAL TRANSITION ATC DISCRETION

ARRIVAL TRANSITION P-RNAV Milano Malpensa**ANAKI 1T**

Path Terminator	Waypoint Name	Fly Over	Track °Mag	Turn Direction	Altitude Constraint	Speed Limit	Recommended Navaid	Bearing/Range to Navaid	Navigation Performance
IF	ANAKI	-	-	-	-	(1)	-	-	P-RNAV
TF	DEVOX	-	001°	-	FL 100	(1)	-	-	P-RNAV

GEN 1T (A discrezione ATC/ATC discretion)

Path Terminator	Waypoint Name	Fly Over	Track °Mag	Turn Direction	Altitude Constraint	Speed Limit	Recommended Navaid	Bearing/Range to Navaid	Navigation Performance
IF	GEN	-	-	-	-	(1)	-	-	P-RNAV
TF	MEBUR	-	010°	-	FL 100	(1)	-	-	P-RNAV

GOLAS 1T

Path Terminator	Waypoint Name	Fly Over	Track °Mag	Turn Direction	Altitude Constraint	Speed Limit	Recommended Navaid	Bearing/Range to Navaid	Navigation Performance
IF	GOLAS	-	-	-	-	(1)	-	-	P-RNAV
TF	MEBUR	-	313°	-	FL 100	(1)	-	-	P-RNAV

IDONA 1T

Path Terminator	Waypoint Name	Fly Over	Track °Mag	Turn Direction	Altitude Constraint	Speed Limit	Recommended Navaid	Bearing/Range to Navaid	Navigation Performance
IF	IDONA	-	-	-	-	(1)	-	-	P-RNAV
TF	MEBUR	-	345°	-	FL 100	(1)	-	-	P-RNAV

LUSIL 1R

Path Terminator	Waypoint Name	Fly Over	Track °Mag	Turn Direction	Altitude Constraint	Speed Limit	Recommended Navaid	Bearing/Range to Navaid	Navigation Performance
	LUSIL	-	-	-	-	(1)	-	-	P-RNAV
TF	MC401	-	242°	-	FL 140	(1)	-	-	P-RNAV
TF	SRN	-	242°	-	FL 100	(1)	-	-	P-RNAV

OSKOR 1R

Path Terminator	Waypoint Name	Fly Over	Track °Mag	Turn Direction	Altitude Constraint	Speed Limit	Recommended Navaid	Bearing/Range to Navaid	Navigation Performance
IF	OSKOR	-	-	-	-	(1)	-	-	P-RNAV
TF	SRN	-	269°	-	FL 100	(1)	-	-	P-RNAV

TOP 1R

Path Terminator	Waypoint Name	Fly Over	Track °Mag	Turn Direction	Altitude Constraint	Speed Limit	Recommended Navaid	Bearing/Range to Navaid	Navigation Performance
IF	TOP	-	-	-	-	(1)	-	-	P-RNAV
TF	ASTIG	-	086°	-	FL 90	(1)	-	-	P-RNAV

STAR P-RNAV Milano Malpensa**AKASU 2H (A discrezione ATC/ATC discretion)**

Path Terminator	Waypoint Name	Fly Over	Track °Mag	Turn Direction	Altitude Constraint	Speed Limit	Recommended Navaid	Bearing/Range to Navaid	Navigation Performance
IF	AKASU	-	-	-	-	(1)	-	-	P-RNAV
TF	MC414	-	166°	-	FL150	(1)	-	-	P-RNAV
TF	IXORA	-	166°	-	FL120	(1)	-	-	P-RNAV
TF	MC415	-	176°	-	FL 120	(1)	-	-	P-RNAV
TF	MC405	-	176°	-	-	(1)	MMP VOR/DME	RDL197/D16	P-RNAV
TF	MC406	-	197°	-	-	(1)	MMP VOR/DME	RDL197/D26	P-RNAV
TF	MC407	-	104°	L	-	200	MMP VOR/DME	RDL188/D26	P-RNAV
TF	SOKBU	-	008°	L	4000FT	200	MMP VOR/DME	RDL188/D22	P-RNAV

Path Terminator	Waypoint Name	Track °Mag	Turn Direction	Altitude Constraint	Speed Limit	Recommended Navaid	Bearing/Range to Navaid	Navigation Performance
HM	SOKBU	008°	L	4000 FT	(1)	MMP VOR/DME	RDL188/D22	Conventional

AKASU 2K

Path Terminator	Waypoint Name	Fly Over	Track °Mag	Turn Direction	Altitude Constraint	Speed Limit	Recommended Navaid	Bearing/Range to Navaid	Navigation Performance
IF	AKASU	-	-	-	-	(1)	-	-	P-RNAV
TF	MC416	-	151°	-	FL 150	(1)	-	-	P-RNAV
TF	MC417	-	151°	-	FL120	(1)	-	-	P-RNAV
TF	MORAD	-	151°	-	-	(1)	-	-	P-RNAV
TF	LASIX	-	163°	-	-	(1)	MMP VOR/DME	RDL141/D12	P-RNAV
TF	LEMKI	-	141°	-	-	(1)	MMP VOR/DME	RDL141/D26	P-RNAV
TF	MC412	-	234°	R	-	200	MMP VOR/DME	RDL151/D26	P-RNAV
TF	RIGON	-	331°	R	4000FT	200	MMP VOR/DME	RDL151/D22	P-RNAV

Path Terminator	Waypoint Name	Track °Mag	Turn Direction	Altitude Constraint	Speed Limit	Recommended Navaid	Bearing/Range to Navaid	Navigation Performance
HM	RIGON	331°	R	4000 FT	(1)	MMP VOR/DME	RDL151/D22	Conventional

ASTIG 1H

Path Terminator	Waypoint Name	Fly Over	Track °Mag	Turn Direction	Altitude Constraint	Speed Limit	Recommended Navaid	Bearing/Range to Navaid	Navigation Performance
IF	ASTIG	-	-	-	-	(1)	-	-	P-RNAV
TF	MC408	-	041°	-	FL 90	(1)	-	-	P-RNAV
TF	MC407	-	042°	-	-	200	MMP VOR/DME	RDL188/D26	P-RNAV
TF	SOKBU	-	008°	-	4000FT	200	MMP VOR/DME	RDL188/D22	P-RNAV

Path Terminator	Waypoint Name	Track °Mag	Turn Direction	Altitude Constraint	Speed Limit	Recommended Navaid	Bearing/Range to Navaid	Navigation Performance
HM	SOKBU	008°	L	4000 FT	(1)	MMP VOR/DME	RDL188/D22	Conventional

DEVOX 1H

Path Terminator	Waypoint Name	Fly Over	Track °Mag	Turn Direction	Altitude Constraint	Speed Limit	Recommended Navaid	Bearing/Range to Navaid	Navigation Performance
IF	DEVOX	-	-	-	-	(1)	-	-	P-RNAV
TF	MC413	-	350°	-	FL 90	(1)	-	-	P-RNAV
TF	MC407	-	351°	-	-	200	MMP VOR/DME	RDL188/D26	P-RNAV
TF	SOKBU	-	008°	-	4000FT	200	MMP VOR/DME	RDL188/D22	P-RNAV

Path Terminator	Waypoint Name	Track °Mag	Turn Direction	Altitude Constraint	Speed Limit	Recommended Navaid	Bearing/Range to Navaid	Navigation Performance
HM	SOKBU	008°	L	4000 FT	(1)	MMP VOR/DME	RDL188/D22	Conventional

MEBUR 1H

Path Terminator	Waypoint Name	Fly Over	Track °Mag	Turn Direction	Altitude Constraint	Speed Limit	Recommended Navaid	Bearing/Range to Navaid	Navigation Performance
IF	MEBUR	-	-	-	-	(1)	-	-	P-RNAV
TF	VOG	-	324°	-	FL 90	(1)	-	-	P-RNAV
TF	MC407	-	316°	-	-	200	MMP VOR/DME	RDL188/D26	P-RNAV
TF	SOKBU	-	008°	-	4000FT	200	MMP VOR/DME	RDL188/D22	P-RNAV

Path Terminator	Waypoint Name	Track °Mag	Turn Direction	Altitude Constraint	Speed Limit	Recommended Navaid	Bearing/Range to Navaid	Navigation Performance
HM	SOKBU	008°	L	4000FT	(1)	MMP VOR/DME	RDL188/D22	Conventional

MEBUR 4K (A discrezione ATC/ATC discretion)

Path Terminator	Waypoint Name	Fly Over	Track °Mag	Turn Direction	Altitude Constraint	Speed Limit	Recommended Navaid	Bearing/Range to Navaid	Navigation Performance
IF	MEBUR	-	-	-	-	(1)	-	-	P-RNAV
TF	MC411	-	346°	-	FL 90	(1)	-	-	P-RNAV
TF	MC412	-	348°	-	-	200	MMP VOR/DME	RDL151/D26	P-RNAV
TF	RIGON	-	331°	-	4000FT	200	MMP VOR/DME	RDL151/D22	P-RNAV

Path Terminator	Waypoint Name	Track °Mag	Turn Direction	Altitude Constraint	Speed Limit	Recommended Navaid	Bearing/Range to Navaid	Navigation Performance
HM	RIGON	331°	R	4000FT	(1)	MMP VOR/DME	RDL151/D22	Conventional

ODINA 2K

Path Terminator	Waypoint Name	Fly Over	Track °Mag	Turn Direction	Altitude Constraint	Speed Limit	Recommended Navaid	Bearing/Range to Navaid	Navigation Performance
IF	ODINA	-	-	-	-	(1)	-	-	P-RNAV
TF	MC418	-	163°	-	FL 150	(1)	-	-	P-RNAV
TF	MC419	-	163°	-	FL 120	(1)	-	-	P-RNAV
TF	MORAD	-	163°	-	-	(1)	-	-	P-RNAV
TF	LASIX	-	163°	-	-	(1)	MMP VOR/DME	RDL141/D12	P-RNAV
TF	LEMKI	-	141°	-	-	(1)	MMP VOR/DME	RDL141/D26	P-RNAV
TF	MC412	-	234°	R	-	200	MMP VOR/DME	RDL151/D26	P-RNAV
TF	RIGON	-	331°	R	4000FT	200	MMP VOR/DME	RDL151/D22	P-RNAV

Path Terminator	Waypoint Name	Track °Mag	Turn Direction	Altitude Constraint	Speed Limit	Recommended Navaid	Bearing/Range to Navaid	Navigation Performance
HM	RIGON	331°	R	4000FT	(1)	MMP VOR/DME	RDL151/D22	Conventional

SRN 4K

Path Terminator	Waypoint Name	Fly Over	Track °Mag	Turn Direction	Altitude Constraint	Speed Limit	Recommended Navaid	Bearing/Range to Navaid	Navigation Performance
IF	SRN	-	-	-	-	(1)	-	-	P-RNAV
TF	LEMKI	-	168°	-	-	(1)	SRN VOR/DME	RDL168/D21	P-RNAV
TF	MC412	-	234°	-	-	200	SRN VOR/DME	RDL179/D23	P-RNAV
TF	RIGON	-	331°	R	4000FT	200	MMP VOR/DME	RDL151/D22	P-RNAV

Path Terminator	Waypoint Name	Track °Mag	Turn Direction	Altitude Constraint	Speed Limit	Recommended Navaid	Bearing/Range to Navaid	Navigation Performance
HM	RIGON	331°	R	4000FT	(1)	MMP VOR/DME	RDL151/D22	Conventional

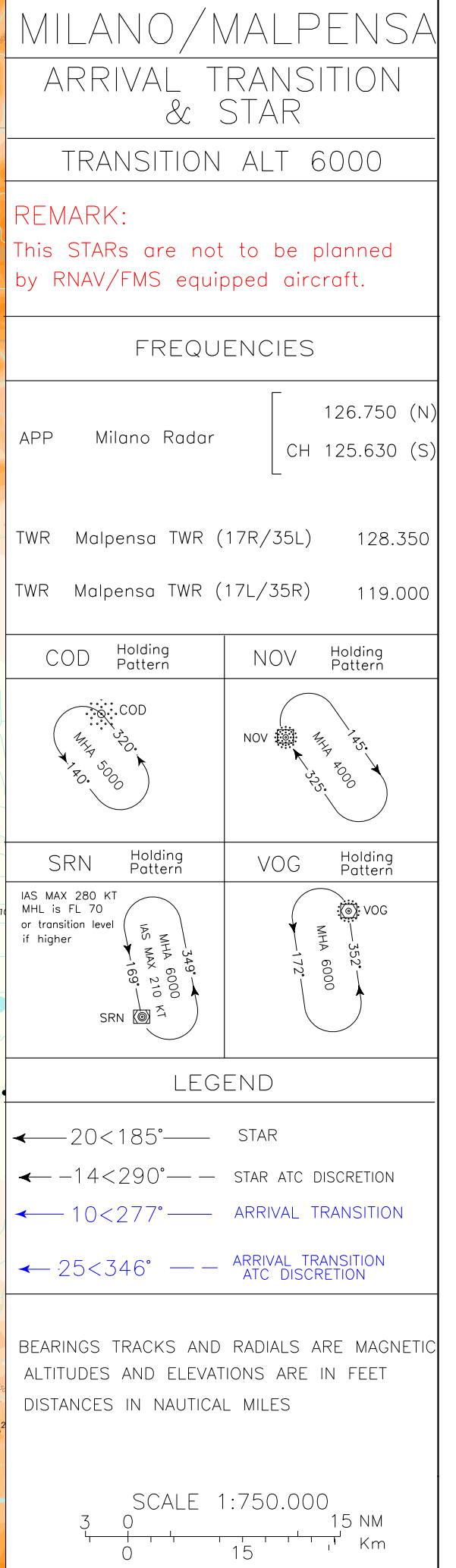
(1) See ENR 2.1.1.1

Waypoints Table formatted according ARINC 424 standards

Waypoint	Latitude	Longitude
MC401	N45453765	E009194803
MC405	N45231835	E008370896
MC406	N45134634	E008325166
MC407	N45124706	E008381516
MC408	N45034018	E008262046
MC411	N45033743	E009043849
MC412	N45152964	E009012546
MC413	N45041268	E008395421
MC414	N45550168	E008334147
MC415	N45441223	E008354412
MC416	N45560117	E008375112
MC417	N45463360	E008450359
MC418	N46003682	E008421193
MC419	N45454598	E008480996

Intenzionalmente bianca

Intentionally left blank



ARRIVAL TRANSITION Milano Malpensa**NOTA 1**

Per le sottoelencate **ARRIVAL TRANSITION** si applicano limitazioni di velocità così come descritto in ENR 2.1.1.1

NOTA 2

Le sottoelencate **ARRIVAL TRANSITION** e **STAR** non sono pianificabili dagli aeromobili equipaggiati con dispositivi RNAV/FMS.

REMARK 1

For the below **ARRIVAL TRANSITION**, speed limitations are applied as described in ENR 2.1.1.1

REMARK 2

The below **ARRIVAL TRANSITION** are not to be planned by RNAV/FMS equipped aircraft.

AKASU 1T

AKASU procedere su TR 140° (RDL 320 SRN VOR) via MC442 (INT RDL/QDR 320/7 NM SRN VOR NDB/DME) diretti a SRN VOR NDB/DME.

AKASU 1T

AKASU proceed on TR 140° (RDL 320 SRN VOR) via MC442 (INT RDL/QDR 320/7 NM SRN VOR NDB/DME) direct to SRN VOR NDB/DME.

MEL/MEA: AKASU – MC442: FL 130; MC442 – SRN VOR NDB/DME: 6000FT

GEN 1S

GEN VOR NDB/DME procedere su TR 351° (RDL/QDR 171 VOG VOR NDB) via MC443 (INT RDL/QDR 171/6 NM VOG VOR NDB/DME) diretti a VOG VOR NDB/DME.

GEN 1S

GEN VOR NDB/DME proceed on TR 351° (RDL/QDR 171 VOG VOR NDB) via MC443 (INT RDL/QDR 171/6 NM VOG VOR NDB/DME) direct to VOG VOR NDB/DME.

MEL/MEA: GEN VOR NDB/DME – MC443: FL 100; MC443 – VOG VOR NDB/DME: 6000FT

GOLAS 1R (A discrezione ATC)

GOLAS procedere su TR 355° (QDR 175° COD L o RDL 175 TZO VOR) diretti a COD L.

GOLAS 1R (ATC discretion)

GOLAS proceed on TR 355° (QDR 175° COD L or RDL 175 TZO VOR) direct to COD L.

MEL/MEA: GOLAS – COD L: FL90

GOLAS 2S

GOLAS procedere su TR 317° (RDL 137 VOG VOR) via MC444 (INT RDL 137/6 NM VOG VOR/DME) diretti a VOG VOR NDB/DME.

GOLAS 2S

GOLAS proceed on TR 317° (RDL 137 VOG VOR) via MC444 (INT RDL 137/6 NM VOG VOR/DME) direct to VOG VOR NDB/DME.

MEL/MEA: GOLAS – MC444: FL 100; MC444 – VOG VOR NDB/DME: 6000FT

LUSIL 1N

LUSIL procedere su TR 242° (RDL 062 SRN VOR) via IMVUD (INT RDL 062/29 NM SRN VOR/DME) – MC401 (INT RDL 062/15 NM SRN VOR/DME) diretti a SRN VOR NDB/DME.

LUSIL 1N

LUSIL proceed on TR 242° (RDL 062 SRN VOR) via IMVUD (INT RDL 062/29 NM SRN VOR/DME) – MC401 (INT RDL 062/15 NM SRN VOR/DME) direct to SRN VOR NDB/DME.

MEL: LUSIL – IMVUD: FL 140; IMVUD – MC401: FL 120; MC401 – SRN VOR NDB/DME: FL85

ODINA 1N

ODINA procedere su TR 150° (RDL 330 SRN VOR) via SULUR (INT RDL/QDR 330/7 NM SRN VOR NDB/DME) diretti a SRN VOR NDB/DME.

ODINA 1N

ODINA proceed on TR 150° (RDL 330 SRN VOR) via SULUR (INT RDL/QDR 330/7 NM SRN VOR NDB/DME) direct to SRN VOR NDB/DME.

MEL/MEA: ODINA – SULUR: FL 130; SULUR – SRN VOR NDB/DME: 6000FT

OSBUL 1R (A discrezione ATC)

OSBUL procedere su TR 277° (RDL/QDR 097 VOG VOR NDB) via LIMBA (INT RDL/QDR 097/16 NM VOG VOR NDB/DME) – MC445 (INT RDL/QDR 097/6 NM VOG VOR NDB/DME) diretti a VOG VOR NDB/DME.

OSBUL 1R (ATC discretion)

OSBUL proceed on TR 277° (RDL/QDR 097 VOG VOR NDB) via LIMBA (INT RDL/QDR 097/16 NM VOG VOR NDB/DME) – MC445 (INT RDL/QDR 097/6 NM VOG VOR NDB/DME) direct to VOG VOR NDB/DME.

MEL/MEA: OSBUL – MC445: FL 100; MC445 – VOG VOR NDB/DME: 6000FT

OSKOR 1N

OSKOR procedere su TR 267° (QDR 087° ORI L) via ORI L quindi TR 269° (RDL 089 SRN VOR) diretti a SRN VOR NDB/DME.

OSKOR 1N

OSKOR proceed on TR 267° (QDR 087° ORI L) via ORI L then TR 269° (RDL 089 SRN VOR) direct to SRN VOR NDB/DME.

MEL/MEA: OSKOR – ORI L: FL 95; ORI L – SRN VOR NDB/DME: 6000FT

TOP 1T

TOP VOR NDB/DME procedere su TR 086° (RDL/QDR 266 VOG VOR NDB o RDL/QDR 086 TOP VOR NDB) via MC446 (INT RDL/QDR 266/6 NM VOG VOR NDB/DME) diretti a VOG VOR NDB/DME.

TOP 1T

TOP VOR NDB/DME proceed on TR 086° (RDL/QDR 266 VOG VOR NDB or RDL/QDR 086 TOP VOR NDB) via MC446 (INT RDL/QDR 266/6 NM VOG VOR NDB/DME) direct to VOG VOR NDB/DME.

MEL/MEA: TOP VOR/DME – MC446: FL 90; MC446 – VOG VOR/DME: 6000FT

STAR Milano Malpensa**NOTA 1**

Per le sottoelencate STAR si applicano limitazioni di velocità così come descritto in ENR 2.1.1.1

REMARK 1

For the below STAR, speed limitations are applied as described in ENR 2.1.1.1

NOTA 2

Le sottoelencate STAR non sono pianificabili dagli aeromobili equipaggiati con dispositivi RNAV/FMS.

REMARK 2

The below STAR are not to be planned by RNAV/FMS equipped aircraft.

COD 1H (A discrezione ATC)

COD L procedere su TR 290° (QDR 290° COD L o QDR 110° NOV NDB) via MC448 (INT RDL169 SRN VOR/QDR 110° NOV NDB) diretti a NOV NDB.

COD 1H (ATC discretion)

COD L proceed on TR 290° (QDR 290° COD L or QDR 110° NOV NDB) via MC448 (INT RDL169 SRN VOR/QDR 110° NOV NDB) direct to NOV NDB.

MEL/MEA: COD L – MC448: FL 70 or TRL if higher; MC448 – NOV NDB: 4000 FT

SRN 1H

SRN VOR NDB/DME procedere su TR 185° (RDL/QDR 185 SRN VOR NDB) per il RIGON (INT RDL/QDR 185/20 NM SRN VOR NDB/DME) quindi virare a destra su TR 325° (QDR 145° NOV NDB) diretti a NOV NDB.

SRN 1H

SRN VOR NDB/DME proceed on TR 185° (RDL/QDR 185 SRN VOR NDB) to RIGON (INT RDL/QDR 185/20 NM SRN VOR NDB/DME) then turn right on TR 325° (QDR 145° NOV NDB) direct to NOV NDB.

MEA: SRN VOR NDB/DME – NOV NDB: 4000 FT

VOG 1H

VOG VOR NDB/DME procedere su TR 344° (RDL/QDR 344 VOG VOR NDB) via MC447 (INT RDL/QDR 344/11 NM VOG VOR NDB/DME) diretti a NOV NDB.

VOG 1H

VOG VOR NDB/DME proceed on TR 344° (RDL/QDR 344 VOG VOR NDB) via MC447 (INT RDL/QDR 344/11 NM VOG VOR NDB/DME) direct to NOV NDB.

MEA: VOG VOR NDB/DME – MC447: 5000 FT; MC447 – NOV NDB: 4000 FT

Waypoints Table formatted according ARINC 424 standards

Waypoint	Latitude	Longitude
MC401	N45453765	E009194803
MC442	N45441703	E008551201
MC443	N44515484	E008592862
MC444	N44532637	E009035419
MC445	N44565877	E009063905
MC446	N44573693	E008494744
MC447	N45083040	E008541295
MC448	N45203108	E009055781